



# Teewinot



## Welcome to Grand Teton National Park

FEW LANDSCAPES IN THE WORLD are as striking and memorable as that of Grand Teton National Park. Rising abruptly from the valley floor, the Tetons offer a testament to the power and complexity of nature. The mountains, valleys, lakes, rivers and skies are home to diverse and abundant plants and animals.

People have been living in the shadow of the Teton Range for more than 11,000 years. The human history of this area is extensive, beginning with American Indian prehistoric life, to the early Euro-American explorers, to the more recent

frontier settlement, of which more than 300 historic structures remain in the park.

This spectacular mountain range and the desire to protect it resulted in the establishment of Grand Teton National Park in 1929. Through the vision and generous philanthropy of John D. Rockefeller, Jr. and others, additional lands were added to create the present day park in 1950.

Grand Teton National Park is truly a unique place. With thoughtful use and careful management, it can remain so for generations to come. As with

other sites in the National Park System, Grand Teton preserves a piece of America's natural and cultural heritage for future generations.

While you are here, take a moment to put your cares aside: take a scenic drive, celebrate winter by skiing or snowshoeing, and lose yourself to the power of this place.

We hope you will be refreshed and restored during your visit, and stay connected to this magnificent landscape long after you have returned home.

**SAVE A LIFE AT NIGHT**

## NEW NIGHT TIME SPEED LIMIT SAVES LIVES!

Starting this fall, the night time speed limit on US Highway 26/89/191 will be lowered from 55 mph to 45 mph from the park's south boundary to the boundary east of Moran Junction. Night time begins 30 minutes after sunset and lasts until 30 minutes before sunrise. Areas around Gros Ventre Junction and Moran Junction will remain 45 mph at all times.

The number of animals killed due to vehicle collisions is rising. In 2010 more than 150 animals were killed on park roads. During the past three years, 64 percent of wildlife fatalities occurred on this section of highway. Throughout the park, 55 percent of fatalities occurred at night. In order to protect the public and to preserve wildlife populations, park officials reduced night time speed limits to give drivers and animals more reaction time. The reduced speed only adds six minutes to your trip along this section of highway.

Please obey the new night time speed limit to help us improve safety and protect wildlife.

### Annual Wildlife Costs

- \$155,000 personal property damage
- >100 large animals killed annually
- Winter road conditions make driving more hazardous!

### Slow Down! Stay Alert!



### International Visitors

Des renseignements en Français sont disponibles aux centres des visiteurs dans le parc.

Sie können Informationen auf Deutsch in den Besucherzentren bekommen.

Se puede conseguir información en Español en el Centro del Visitante.

Accessibility information available at visitor centers and on the Grand Teton Website: <http://www.nps.gov/grte>.

### Contact Information

**Grand Teton National Park Website**  
**Grand Teton National Park Tweets**

<http://www.nps.gov/grte/>  
<http://twitter.com/grandtetonnp>

EMERGENCY .....	911
Park Dispatch .....	(307) 739-3301
Visitor Information .....	(307) 739-3300
Weather .....	(307) 739-3611
Road Construction Hotline .....	(307) 739-3614
Backcountry & River Information .....	(307) 739-3602
Climbing Information .....	(307) 739-3604
Bridger-Teton National Forest Avalanche Center .....	(307) 733-2774
TTY/TDD Emergency Calls Only .....	(307) 739-3301
Snowshoe Hike Reservations/Craig Thomas Discovery & Visitor Center .....	(307) 739-3399

### Snowshoe Walk



Experience winter in Grand Teton National Park. Join a ranger for a guided snowshoe walk. Walks offered daily, late December through mid-March, conditions permitting. See page 2.

### Contents

<b>Trip Planning and Safety</b> .....	2
<b>Concessioners</b> .....	2
<b>Technology</b> .....	3
<b>Partners</b> .....	3
<b>Park Map</b> .....	4

# Make the Most of Your Park Visit



Wondering how to make the most of your time in Grand Teton National Park? Take a look at the suggestions below to help plan your visit. Stop by the Craig Thomas Discovery and Visitor Center for trip planning assistance.

## Activities

### Ranger-guided Snowshoe Walks



Are you curious about winter ecology or snow science? Would you like to experience the park in winter? A snowshoe walk with a park naturalist is the perfect way to introduce yourself to winter in the Tetons and to experience travel on snowshoes. Naturalists provide guided snowshoe walks from the Craig Thomas Discovery and Visitor Center daily late December through mid-March, conditions permitting. Call the Craig Thomas Discovery and Visitor Center at (307) 739-3399 to make reservations, beginning December 1st. A \$5 per adult, \$2 per child donation is suggested for the use of snowshoes.

### Cross-country Skiing & Snowshoeing

Cross-country skiing and snowshoeing are great ways to experience the exhilaration of winter. Watch for wildlife such as moose, coyote and ermine, and look for signs of wildlife in the snow.

Please respect groomed ski tracks by walking or snowshoeing beside them rather than on them.

From November 1 through April 30<sup>th</sup>, the Teton Park Road from the Taggart Lake trailhead to Signal Mountain Lodge is open for non-motorized use only. The road is intermittently groomed to provide a packed surface for snowshoeing and cross-country touring. Other places to enjoy cross-country skiing and snowshoeing include Colter Bay, Moose-Wilson Road, Taggart Lake and Flagg Ranch.

### Backcountry Skiing & Snowboarding

Jackson Hole is world-renowned for both its lift-accessed and backcountry skiing opportunities. Few places provide the scenery, variety of terrain, ease of access and challenging lines found in the park's backcountry.

When skiing or snowboarding in the national park backcountry you are responsible for managing and assessing your risks. If you access the park from the Jackson Hole Mountain Resort, keep in mind that, unlike the ski resort, the park does not perform avalanche hazard reduction work. Please check the park map on page 4 for wildlife closures.

If your plans include backcountry camping, you must obtain a backcountry permit free of charge at the visitor center in Moose.

### Winter Camping

Park campgrounds are closed during the winter; however, primitive winter camping is allowed near the Colter Bay Visitor Center for \$5 per night. Pay at the self-pay station by the restroom. Camp on the snow that covers the parking lot.

### Snowmobiling

Snowmobile use is limited in Grand Teton National Park. Please check at the visitor center for current information.

### Fishing

Fishing in Grand Teton National Park is subject to Wyoming state regulations. A Wyoming fishing license is required in the park and parkway. Obtain fishing regulations at the visitor center in Moose.

## Safety and Regulations

### Winter Safety

- Protect yourself. Know your equipment and your capabilities and limitations.

- Avoid skiing or snowshoeing alone. Always let someone know your planned destination, route and expected time of return.

- HYPOTHERMIA is a common cause of human fatalities in mountain country. Carry extra clothing and dress to prevent hypothermia. Never leave a member of your party alone. If someone you are with begins to act or talk abnormally, make him or her put on more clothing and drink warm liquids. Learn about treating hypothermia before your trip.

- Be prepared for sudden changes in the WEATHER. Snow and weather conditions may vary considerably throughout the day and by elevation. Check the weather forecast before you venture out, and above all use common sense.

- Be alert for AVALANCHE hazards, especially in mountain canyons and along ridge tops. Inquire about current and forecasted avalanche hazard conditions at a visitor center. Call the Bridger-Teton National Forest Avalanche Center for daily forecasts at (307) 733-2664.

### Wildlife

Maintain a distance of at least 100 yards from bears and wolves, and 25 yards from all other animals whether on foot or in your vehicle. Obey all wildlife closures (see map page 4).

### Pets

During the winter, pets are not allowed away from plowed roadways or parking areas, except the unplowed portions of the Teton Park and Moose-Wilson roads. Restrain pets on a leash no longer than six feet at all times. Keep pets within 30 feet of roadways; pets are not allowed on trails or in the backcountry, in boats on the Snake River, in boats on lakes other than Jackson Lake or in visitor centers. Pet owners are required to clean up after their animals.

### Firearms

Wyoming state regulations apply. Carrying or possessing firearms is prohibited in buildings where notice is posted. Firearms may not be discharged in a national park, except by permitted individuals during legal hunting seasons.

### Campfires

Prevent fires by following regulations. Backcountry campfires are not permitted except by permit on Leigh and Jackson lakes. Always make sure your campfire is completely out.



### Let's Get Moving in Grand Teton National Park

Let's Move Outside encourages and all park visitors to engage in outdoor activities to get bodies moving and hearts pumping. First Lady Michelle Obama developed the Let's Move campaign to end childhood obesity within a generation. This program is now underway in national parks all over the country. Join our ranger-guided snowshoe walk to have fun and get healthy!

## Average Temperatures & Snowfall

Moose, WY

January	High 25.9 °F	Low 0.9 °F	Snow 43.3 in
February	High 31.1 °F	Low 3.3 °F	Snow 28.8 in
March	High 39.3 °F	Low 12.0 °F	Snow 20.1 in
April	High 49.3 °F	Low 22.2 °F	Snow 9.2 in
May	High 61.0 °F	Low 30.8 °F	Snow 2.4 in
June	High 70.7 °F	Low 37.3 °F	Snow 0.1 in
July	High 80.5 °F	Low 41.3 °F	Snow 0 in
August	High 79.0 °F	Low 39.6 °F	Snow 0 in
September	High 69.1 °F	Low 32.2 °F	Snow 0.4 in
October	High 55.7 °F	Low 23.1 °F	Snow 4.8 in
November	High 38.3 °F	Low 13.7 °F	Snow 23.4 in
December	High 26.5 °F	Low 1.9 °F	Snow 40.0 in

## Park Concessioners & Lodging

**CLIMBING GUIDES**  
Exum Mountain Guides  
(307) 733-2297  
Open year-round  
www.exumguides.com

**Jackson Hole Mountain Guides**  
(307) 733-4979  
Open year-round  
www.jhmg.com

**CROSS COUNTRY SKI & SNOWSHOE TOURS**  
Jackson Hole Mountain Resort  
(307) 733-2292  
www.jacksonhole.com

**NOLS/RMB**  
(800) 710-6657  
www.nols.edu

**Rendezvous Ski Tours**  
(307) 353-2900  
www.skithetetons.com

**The Hole Hiking Experience**  
(866) 733-4453  
www.holehike.com

**WINTER LODGING FACILITIES**  
Triangle X Ranch  
Open: late December to late March  
(307) 733-2183  
www.trianglex.com

**Dornan's Spur Ranch**  
Open year-round  
(307) 733-2522  
www.dornans.com

Additional accommodations can be found in the nearby communities of Jackson, Wilson, and Teton Village. Visit the Jackson Hole Chamber of Commerce website for more information at [www.jacksonholechamber.com](http://www.jacksonholechamber.com). (307) 733-3316

# Go Digital

## Craig Thomas Discovery & Visitor Center



Grand Teton National Park invites you to enjoy the new Craig Thomas Discovery and Visitor Center Auditorium. This new facility serves as a launching point for grand experiences through the interpretive park film "Life on the Edge." Grand Teton National Park Foundation donors funded this 3,600-square-foot, 154-seat auditorium, featuring recycled, sustainable, and energy-efficient materials. The auditorium is fully accessible and equipped for the hearing impaired. Please

ask at the visitor center for details.



Explore the visitor center.

Everyone will love the engaging exhibits about the people, wild communities and preservation of this place. Discover wildlife hidden throughout.

See how mountaineering has evolved in the Teton Range and place climbing protection gear on an interactive rock wall display. Enjoy a breath-taking view of the Teton Range from the lobby, and a bird's eye view of the park by walking along the video river.

The visitor center is open daily year-round, closed on December 25th. Hours are 9 a.m. to 5 p.m. from November 1, 2011 through April 30, 2012 (closed at 2 p.m. on November 24th and December 24th).

## What's New

### Wireless Internet

Free wireless internet access is available to the public at the Craig Thomas Discovery and Visitor Center in Moose.



### Multimedia Presentations

The official website of Grand Teton National Park offers a variety of video and interactive products: <http://www.nps.gov/grte/photosmultimedia/multimedia.htm>.

### Video Podcasts

Plan your trip, view wildlife, learn about safety in bear country, understand the powerful forces that shaped these mountains, and learn about the Murie family who helped preserve this landscape. These videos are also available on YouTube as user GrandTetonNP1



### Interactive Panoramas

Take a closer look at some of Grand Teton's awe-inspiring scenery through a series of panoramic images that pan up to 360 degrees.

### Guide-by-Cell

Enjoy a guided ranger walk through the Menors Ferry Historic District with your cell phone. Learn about the settlement of Jackson Hole and the establishment of the park with six recorded ranger talks. To access, call (408) 794-3878.



### Grand Teton App

The Official App for Grand Teton National Park includes the essential information you need to plan your trip or experience the park without leaving your home. Download to your iPhone: <http://itunes.apple.com/us/app/grand-teton-national-park/id382628848?mt=8>

## Write on our Wall

Like us on Facebook to get park updates, or share photos and your thoughts with our friends: <https://www.facebook.com/pages/Grand-Teton-National-Park-Official-Page/130250293656242>.

Follow us on Twitter: <http://twitter.com/GrandTetonNPS>.



## Learn & Discover



Visit our new fun and educational website: Discover Grand Teton! We have partnered with the Grand Teton National Park Foundation to create an exciting new resource for visitors. The website highlights the park's history, geology, wild communities and Junior Ranger program.

Go to: <http://www.discovergrandteton.org> to learn and experience the park virtually.

## Park Partners

Park partners help accomplish park goals by supporting important projects, programs and visitor services.

**Grand Teton Association**  
P.O. Box 170  
Moose, WY 83012  
(307) 739-3403  
[www.grandtetonpark.org](http://www.grandtetonpark.org)

**Grand Teton National Park Foundation**  
P.O. Box 249  
Moose, WY 83012  
(307) 732-0629  
[www.gtnpf.org](http://www.gtnpf.org)

**Teton Science Schools**  
P.O. Box 68  
Kelly, WY 83011  
(307) 733-4765  
[www.tetonscience.org](http://www.tetonscience.org)

**The Murie Center**  
P.O. Box 399  
Moose, WY 83012  
(307) 739-2246  
[www.muriecenter.org](http://www.muriecenter.org)

**University of Wyoming/ NPS Research Station**  
P.O. Box 3166  
Laramie, WY 82071-3166  
[www.uwyo.edu](http://www.uwyo.edu)

We invite you to become an annual member-at-large entitled to a 15% discount on purchases at all GTA visitor center outlets, as well as on catalog and website orders. Many cooperating association stores nationwide offer reciprocal discounts.



- \$35 Individual Annual Member with discount privileges
- \$50 Associate Annual Member with discount privileges and commemorative Grand Teton canvas bookbag

Name: \_\_\_\_\_  
Address: \_\_\_\_\_  
City: \_\_\_\_\_ State/Zip Code: \_\_\_\_\_  
Date of Application: \_\_\_\_\_ Phone: \_\_\_\_\_  
Paid by  Cash  Check  Credit Card  
Card Number \_\_\_\_\_ Exp. Date \_\_\_\_\_

Grand Teton Association • P.O. Box 170 • Moose, WY 83012  
(307) 739-3403 • [www.grandtetonpark.org](http://www.grandtetonpark.org)

Yes! I would like to be a part of the future of Grand Teton National Park.



Name: \_\_\_\_\_  
Address: \_\_\_\_\_  
City: \_\_\_\_\_ State/Zip Code: \_\_\_\_\_  
Email: \_\_\_\_\_ Phone: \_\_\_\_\_

Please include your check made out to the Grand Teton National Park Foundation, or supply the following credit card information.

Credit Card Number \_\_\_\_\_ Exp. Date \_\_\_\_\_  
 Visa  Mastercard Cardholder's Signature \_\_\_\_\_

Grand Teton National Park Foundation • P.O. Box 249 • Moose, WY 83012  
(307) 732-0629 • [www.gtnpf.org](http://www.gtnpf.org)

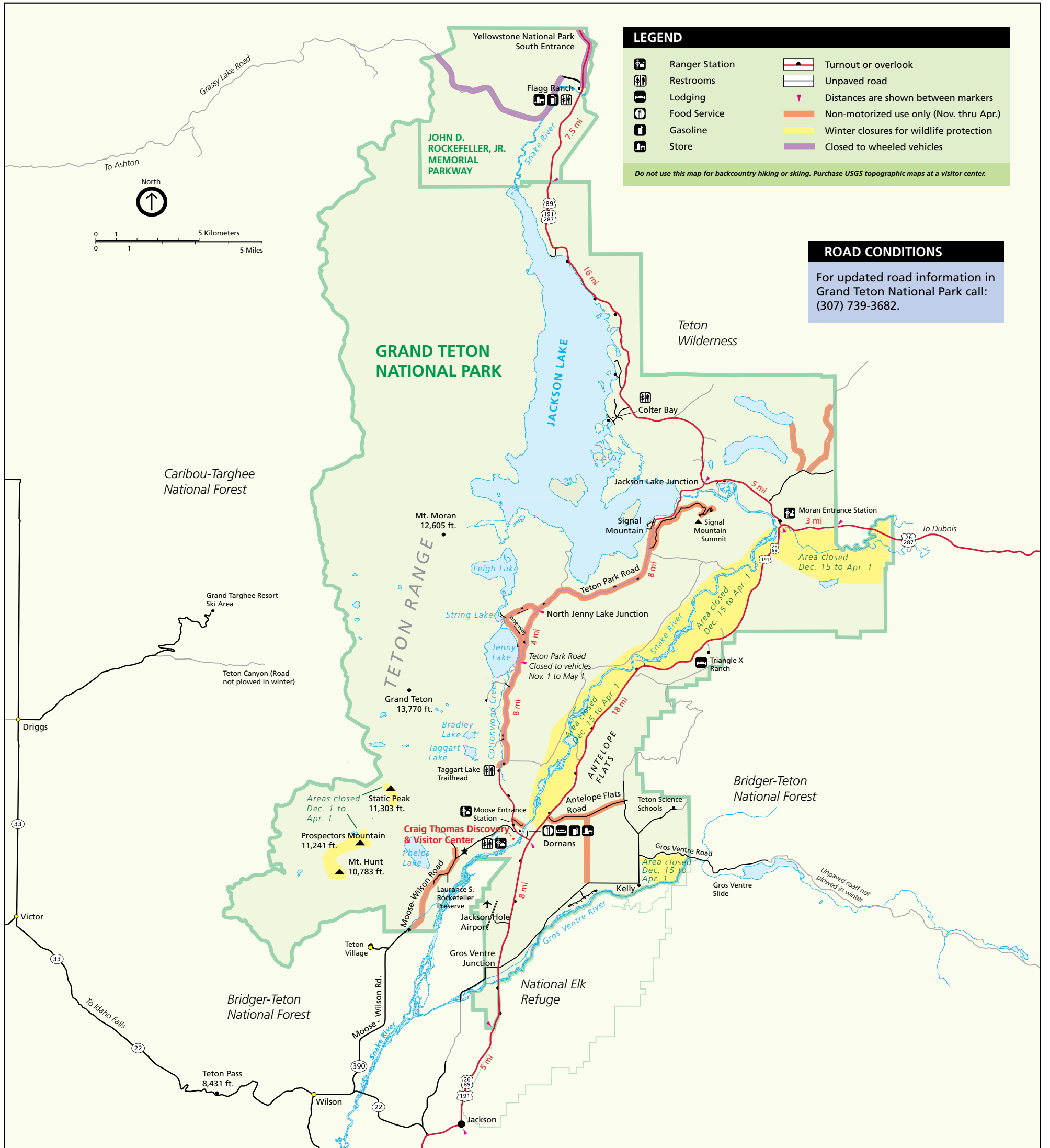
**GRAND TETON ASSOCIATION**  
Grand Teton Association was established in 1937 as the park's primary partner to increase public understanding, appreciation, and enjoyment of Grand Teton National Park and the Greater Yellowstone area. Since that time, the Association has been aiding the interpretive, educational, and research programs.

When you make a purchase at an Association bookstore, you are supporting the educational, interpretive, and scientific programs in Grand Teton National Park. Your purchase also supports the publication of this newspaper, books, and the free educational handouts available at visitor centers and entrance stations.

**GRAND TETON NATIONAL PARK FOUNDATION**  
Grand Teton National Park Foundation provides private financial support for special projects that enhance and protect Grand Teton National Park's treasured resources. Since 1997, our organization has raised more than \$20 million for education-based capital projects, work and learn programs

that reconnect youth to nature, and wildlife research and protection. By funding initiatives that go beyond what the National Park Service could accomplish on its own, Foundation friends solve park challenges and create a solid future for Grand Teton.

# Park Map



## Drive Safely!

WINTER DRIVING can be challenging. Park roads may be covered with ice or hard-packed snow. Winter storms can create white-out driving conditions. Make sure your vehicle is equipped with winter or all-season tires and carry tire chains when driving over mountain passes.

- Roads may be icy or snow-covered, drive below the speed limit when conditions warrant.
- Watch for wildlife on the roadway, especially in the morning and evening.
- Carry an emergency kit and a shovel in your vehicle. Snowstorms may occur at any time. Roads may close for visitor safety.
- Always wear your seat belt.
- Be prepared for changing weather conditions.

### Accessible Roads During Winter

The park's main roadways, Highway 89/191 and Highway 26/287, are plowed and open for winter travel from the town of Jackson to Flagg Ranch near Yellowstone National Park's south boundary.

### Seasonal Road Closures

Much of the Teton Park Road (also called the inner park road) and the Moose-Wilson Road are closed to vehicles during the winter months. See the map for additional seasonal road closures. The unplowed section of the road from Taggart Lake trailhead parking area to Signal Mountain Lodge—a distance of 15 miles—is open to non-motorized use only (skiers and snowshoers).

